



HO SCALE TERRACE HOUSE Assembly Instructions

Copyright Edward Gallier July 2015
edwardgallier@syddd.com

Contents

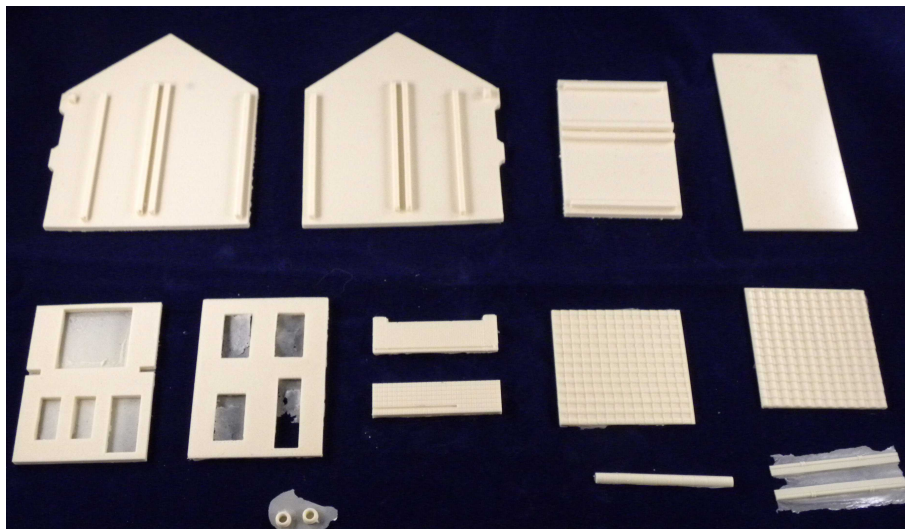
Introduction.....	3
House Assembly.....	5
Windows and Doors.....	8
Windows, Doors, Porch and Balcony Assembly.....	9
Roof Assembly.....	15

Introduction

Thank you for purchasing the HO scale Terrace House kit/s. These instructions should help in constructing this kit, making it go together easily and so it looks good. Following the steps in these instructions will aid in making a fine model. Once together, feel free to enhance it. Please read the instructions all the way through before attempting to assemble it. Following the steps is important to make the parts fit properly and make painting easier.

Enclosed should be some resin parts for the house assembly, some styrene parts for the roof and some clear film parts with printing on them for the porch and balcony railings.

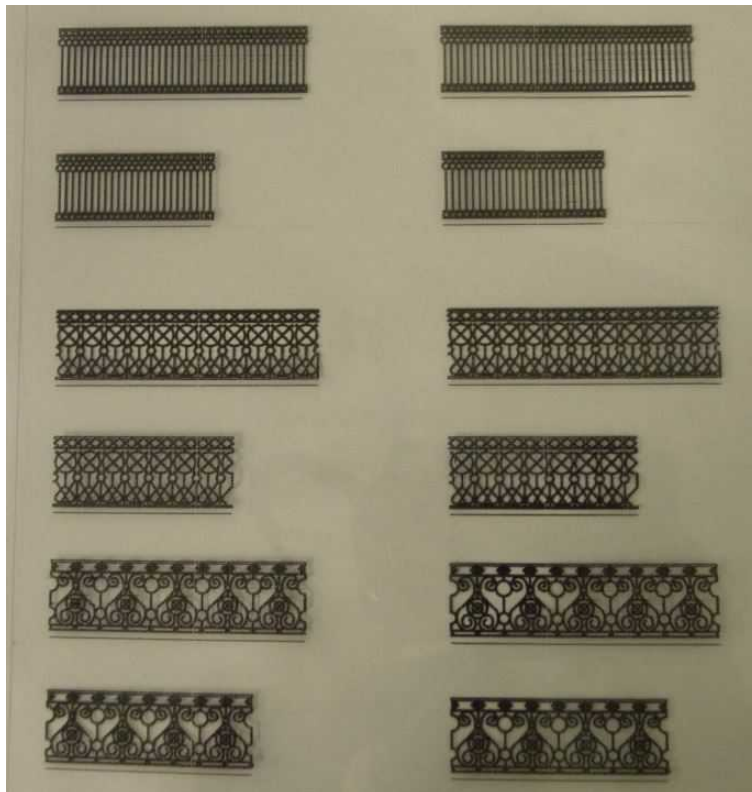
Once you have read the instructions it is best to start with removing flash from the resin cast parts, windows and doors. The resin parts should then be washed with sugar soap and a brush (like a toothbrush) to remove any mould release agent from them. Care is taken to make the castings but resin parts may have some air bubbles and they may be filled with Tamiya Putty (pictured later in these instructions). Another consideration with resin casting is sanding resin parts may open up sub surface bubbles.



Cast Parts



Styrene Parts



Clear Film Parts

Each kit should have two of the railing sets shown previously in the “Clear Film Parts”. If you have purchased several kits effort would be made to see that you received a variety of railing styles.

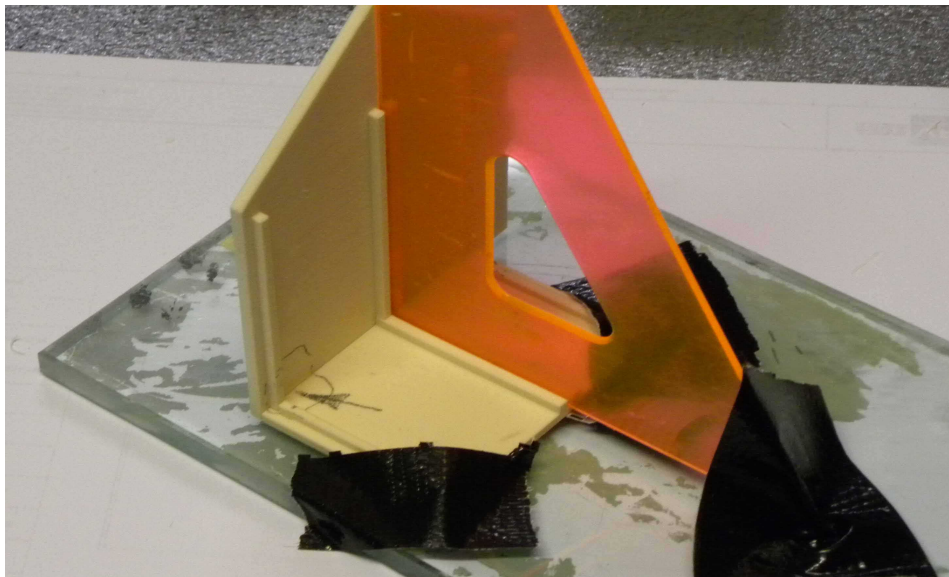
House Assembly

This section of the instructions discusses assembling most of the resin parts. To glue the resin parts we have used Super Glue with the Zap Kicker applied after the parts have glue applied and are in their final position. The Zap Kicker speeds up the setting of Super Glue and makes the Super Glue flow into the joint.



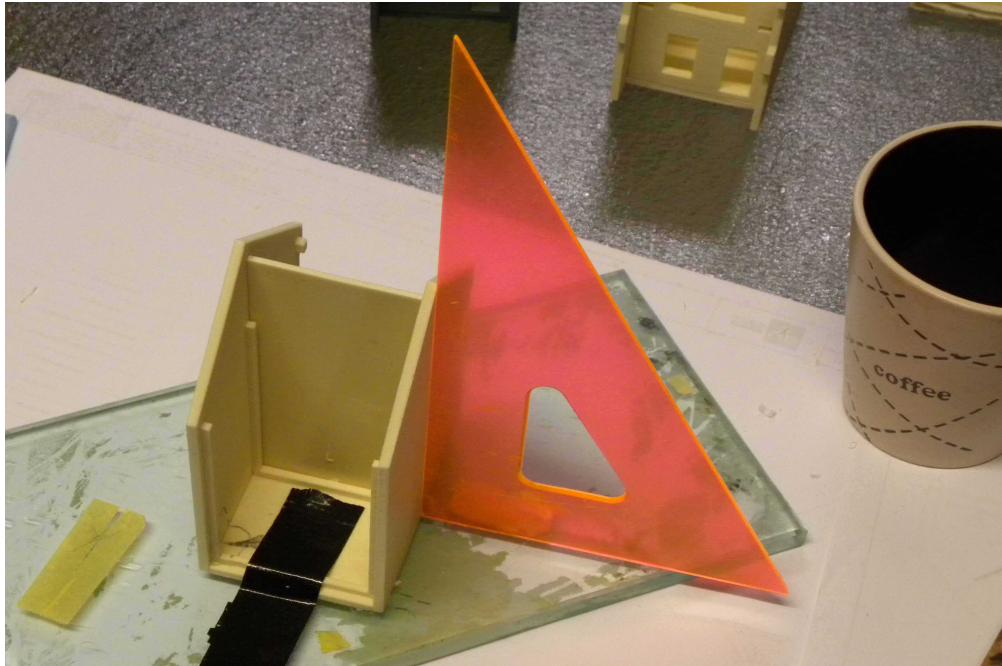
Super Glue and Zap Kicker

The house assembly is started by placing the floor on a flat surface and making sure one side is at a right angle to it. Before applying glue, make sure the back of the floor and the back of the side match up evenly at the back of the model.



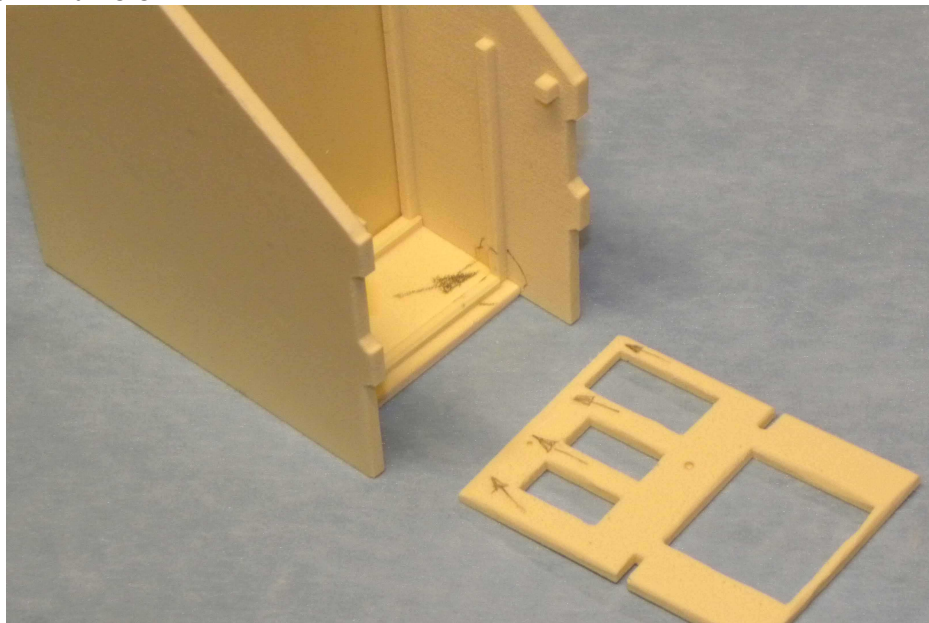
Floor and Side at Right Angles and Matching up Evenly at The back of The Model

Once the Floor and Side are in the proper position, apply glue along the inside corner (see pencilled arrow in the previous picture) where they meet. Next, make sure the other side is at a right angle to the floor and matching up evenly with the back of the floor and glue it into position. Note, the picture below has the centre part of the model in place, **DO NOT GLUE THE CENTRE PART IN AT THIS TIME.**



Floor and Other Side at Right Angles and Matching up Evenly at The back of The Model

The next step is to put the front on the house assembly. You may notice the guides on the inside of the floor and sides may not line up perfectly (see the single arrow in the next picture). This will probably require some sanding back of the front piece so it will fit flush with the front of the floor. The sanding would be along the inside bottom of the front part (see the four arrows in the next picture). Once the front is sanded to fit flush with the floor, glue it in place by applying glue on the inside corners.

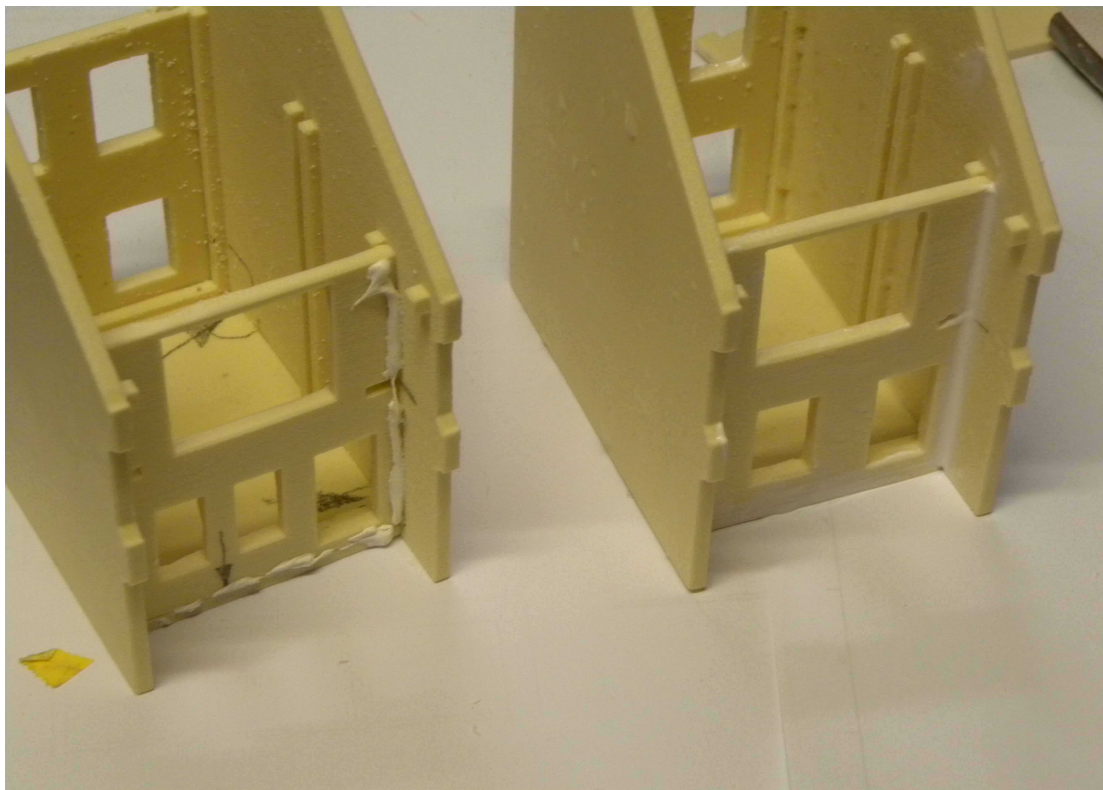


House Assembly and Front Part

Once the House Assembly is together, it is time to fill the joins and any imperfections in the assembly. I used Selleys No More Gaps to fill in the front joins.



Selleys No More Gaps



Selleys No More Gaps applied and smoothed into the joint

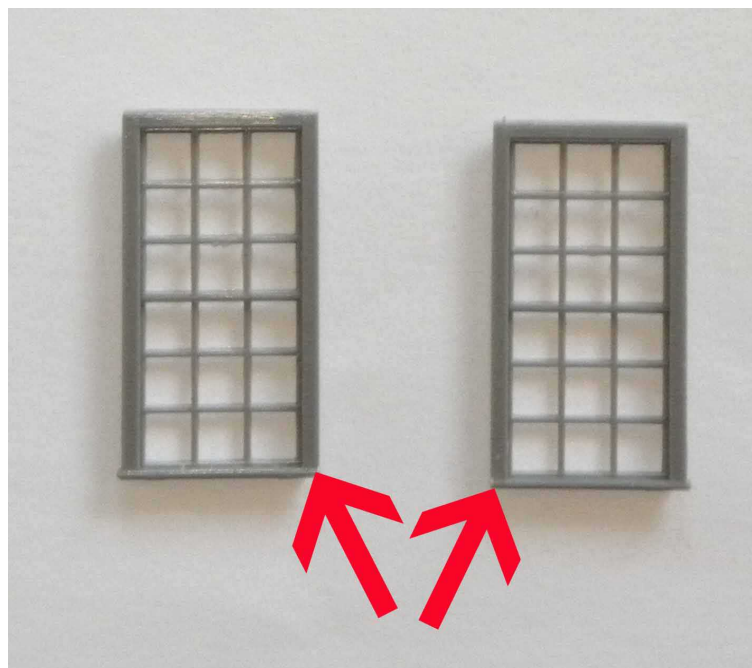
The rear of the model may need some filling. At the same time, there may be bowing along the bottom of the sides that needs some filling. I use Tamiya putty for these tasks and filling any air bubbles in the castings. If you are going to build the Terrace House with the outside toilet/laundry, this is the time to glue it to the back on the side of the ground floor window.



Tamiya Putty

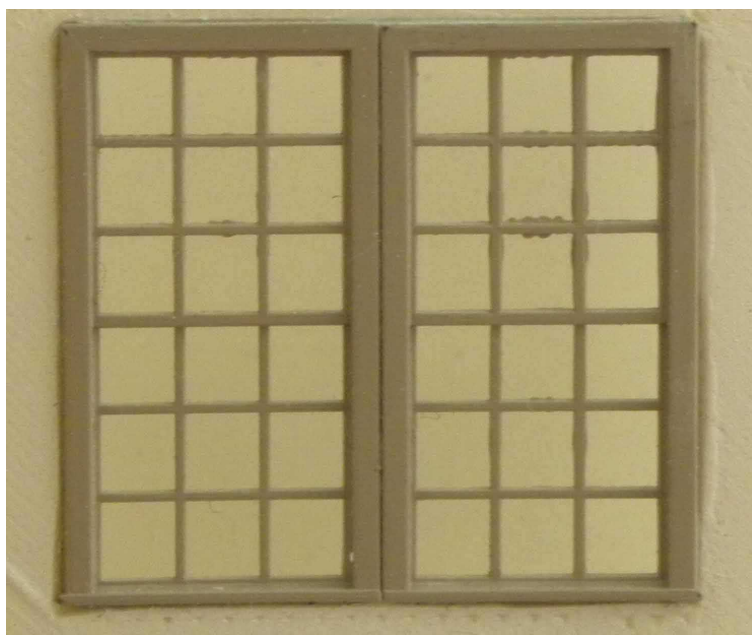
Windows and Doors

The next step is to check the fit of doors and windows to the house assembly. Some sanding, scraping or filing may have to be done to allow the windows and doors to fit. The top floor, front double door has to be assembled before checking the fit. The Double door is made up by trimming some of the sill back from the two halves of the door.



Arrows Showing Where The door Sill Has Been Trimmed Back

Once the sills have been trimmed, the halves can be glued together and the check fit to the house assembly can be made.



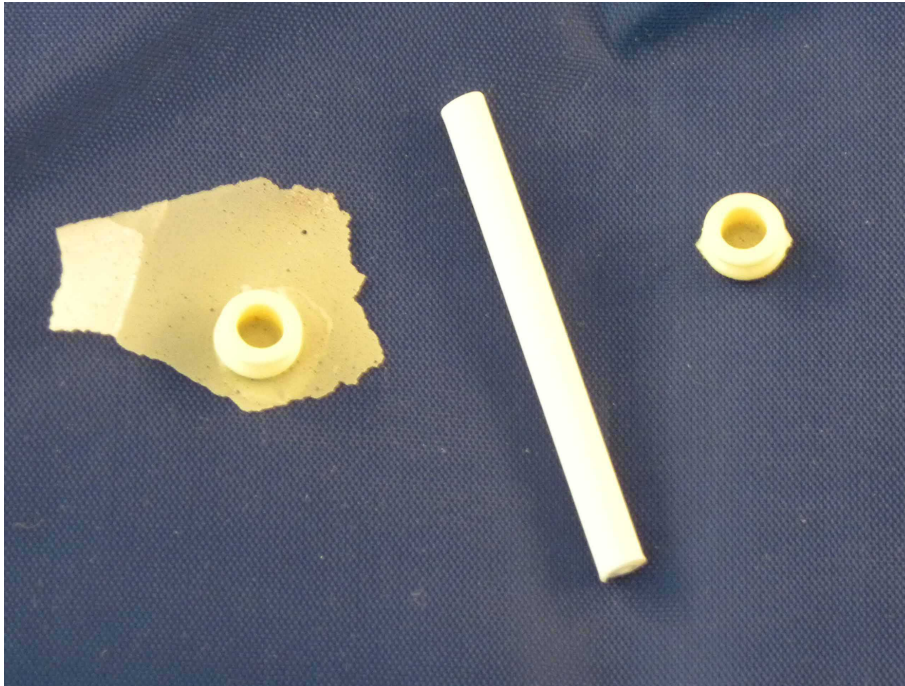
The Completed Double Door

Once the windows and doors have been cleaned of flash and check fitted, they can be painted.

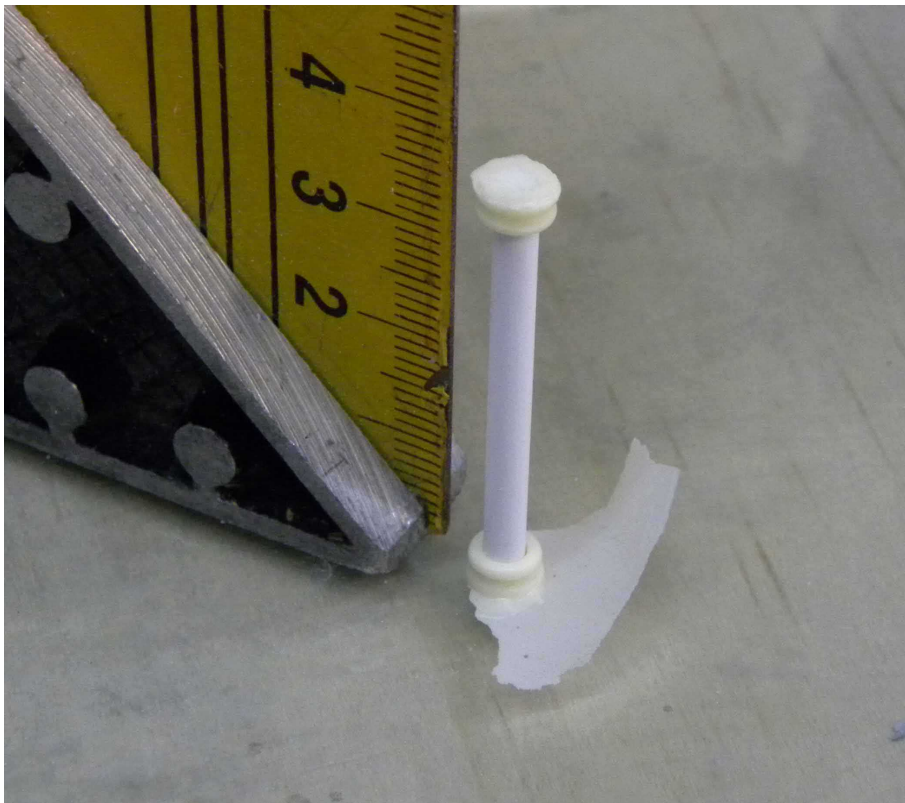
Windows, Doors, Porch and Balcony Assembly

The porch and balcony have a groove in them. This groove is where the clear film railings will be glued. Check to make sure the groove is clear of any flash. Check the fit of the ground floor porch and the top floor balcony. Check the fit of the front roof support (the roof support is shown in pictures later on in these instructions), cut it to fit and paint it. Some sanding, scraping or filing may have to be done to allow the porch and balcony to fit. Once the balcony, porch and front roof support parts fit, paint them. Now, is the best time to paint the main house assembly. Once the paint is dry, glue the windows and doors in place.

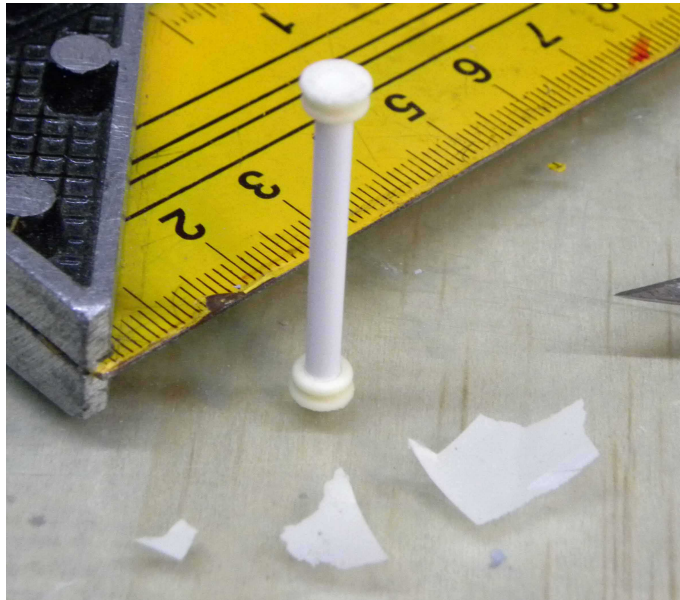
The balcony support column is made from three parts. The column parts have to be glued together, cleaned of flash and then painted. Before gluing the column parts together, check fit the front porch, column and balcony floor. The column may need to be shortened.



The Column Parts



The Column Glued Together



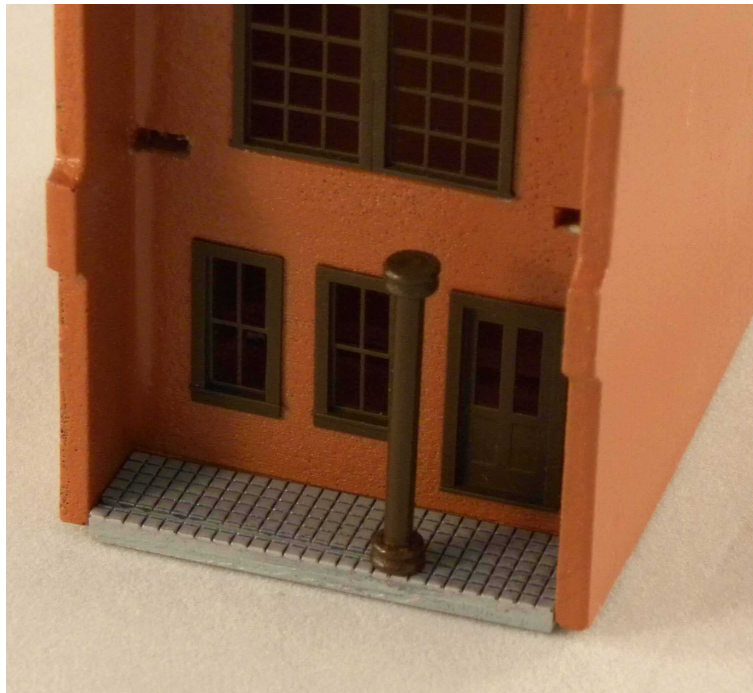
The Column Parts With Flash Removed

The porch and balcony assembly can begin. The porch and balcony are to be assembled from the ground up. The next picture shows the detail of the actual production column, balcony and porch. The balcony and porch have a slot in them for the railing material. Make sure the slot is clear of any flash before painting. Paint the column, porch and balcony before assembly. I used Tamiya Grey Primer for the porch and gave it a wash to show the tile detail. I painted the column the same colour as the windows and doors. The balcony was painted with Tamiya Wood Deck Tan. First glue the painted porch to the house with the slot in front.



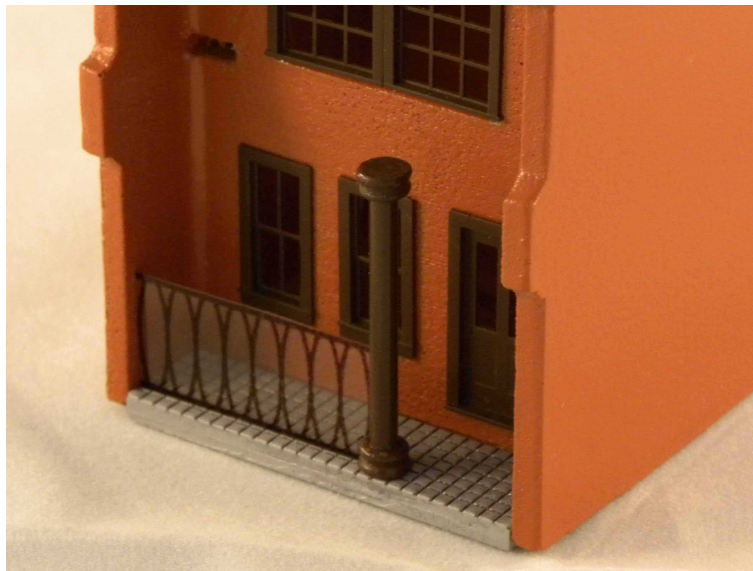
The Porch Glued in Place

Glue the column to the porch so its centre is on the end of the slot.



Column Glued in Place

Cut the clear railing for the Porch to fit, then glue in place.



Porch Railing in Place

The painted Balcony can now be glued in place.



Balcony in Place

Cut the clear railing for the balcony to fit, then glue in place.



Balcony Railing in Place

The front roof support can now be glued in place.



Front Roof Support in Place



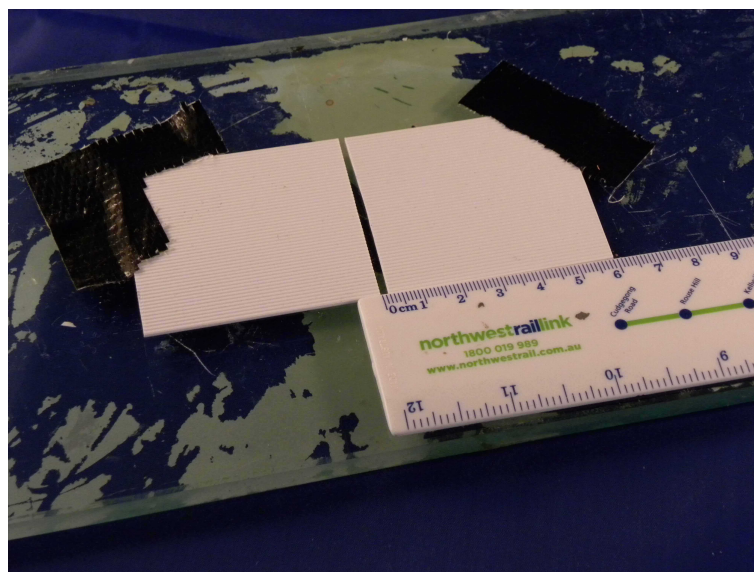
Front Rain Gutter in Place



Rear Rain Gutter in Place

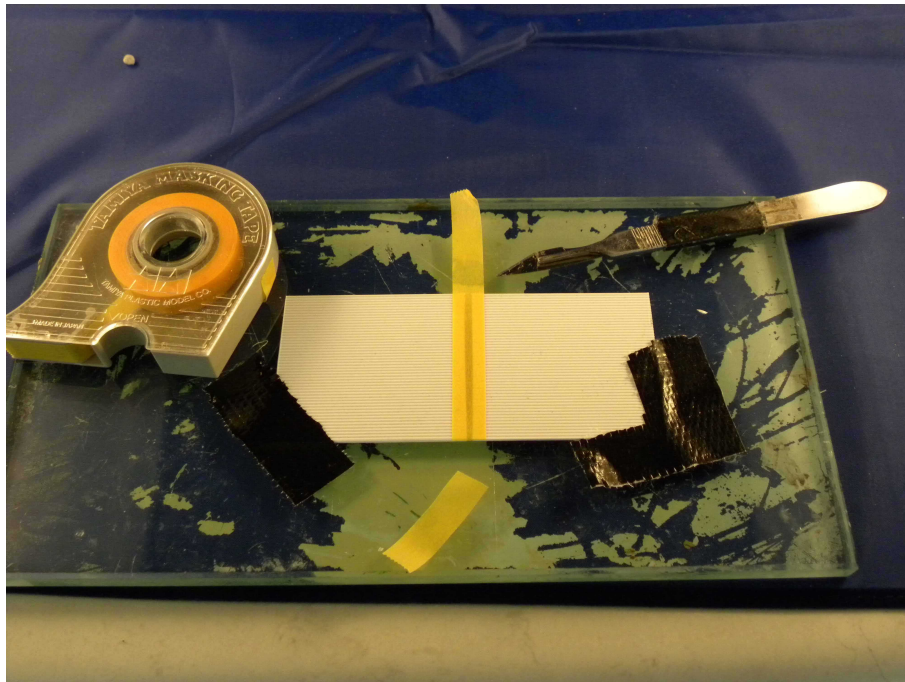
Roof Assembly

Check the fit of the roof panels (and ridge capping if using the tile or slate roof option) to the house assembly. Some sanding of the panel edges may be needed. Paint the roof. The ridge capping will have to be cut and/or sanded to fit. Tape the two roof panels face down to a flat surface so the top edges are together.



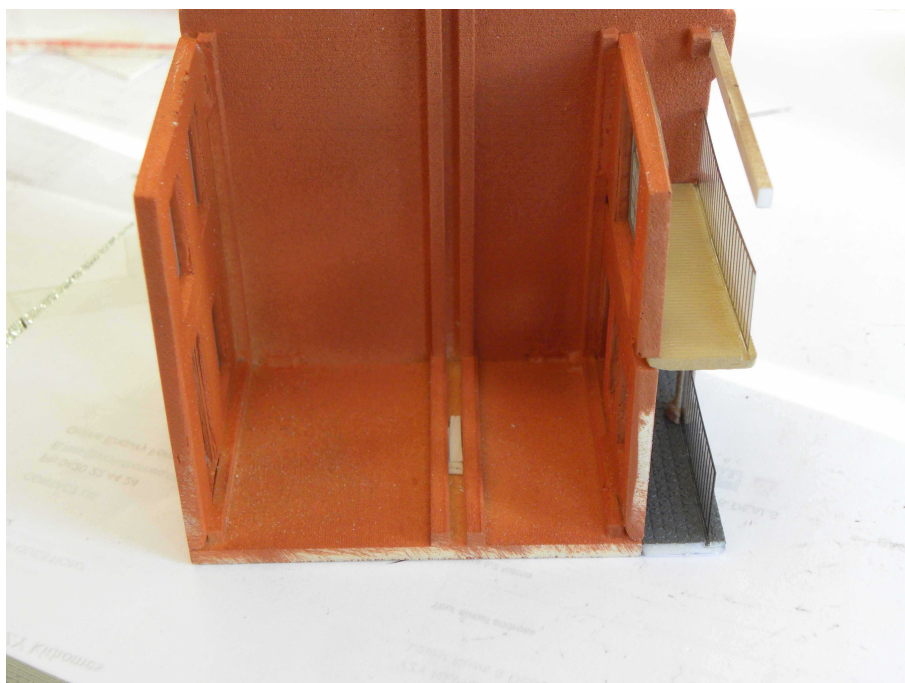
Roof Panels Taped in Place

Make a ridge cap for the roof with 10mm wide masking tape.



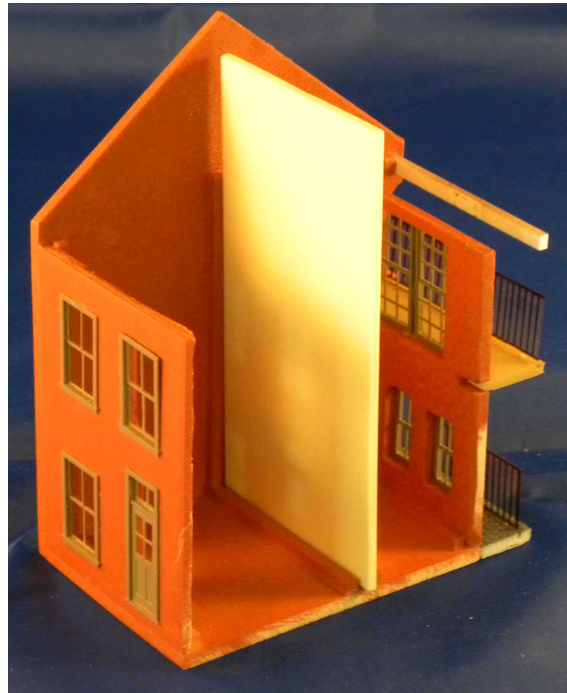
10mm Wide Masking Tape For Ridge Cap

Check the fit of the roof to the house assembly. Some sanding of the roof edges may be needed. Paint the roof. To get the roof to fit properly, some packing strips may be needed under the house centre part.



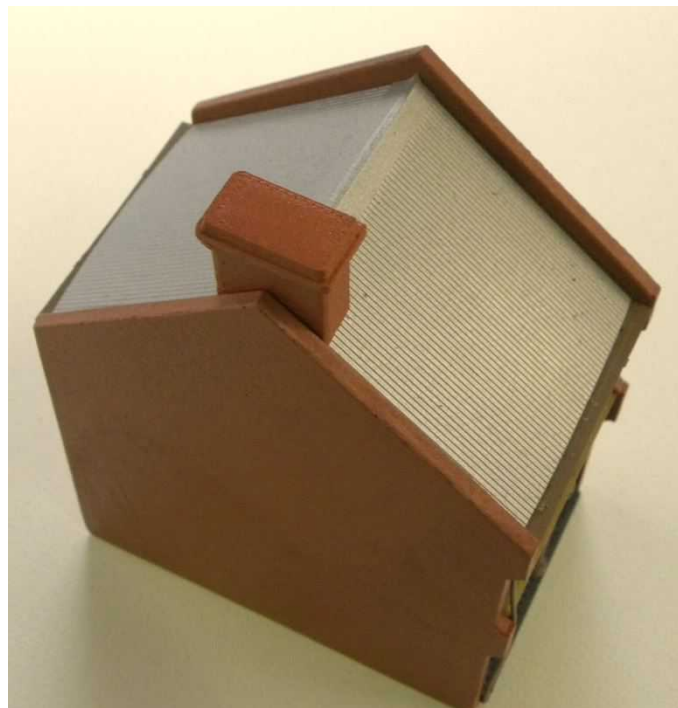
Packing Strips For The Centre Part

You may want to add some detail to the inside of the house, if so, this is the time to do it.



The Centre Part In Place

The roof may now be put in place.



The Roof In Place

I hope you have enjoyed putting this model together. Thank you again for purchasing it.